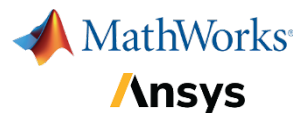




Welcome Packet

SAE AERO DESIGN®

East 2024





Welcome to Florida!

Aero Design East 2024 Staff and Rules Committee:

Mike Beriswill: East, Contest Dir
Rich DeBerardinis: East Dept. Contest Dir
Lonnie Dong: Rules Committee Chairman
David Moroniti: Scoring Lead
Glenn Cashion: Head Judge
Power Limiter Tech Support
Ryan Reynolds: West Event Director
Ashley Marshall: Assistant Air Boss
Josh Childs: Chief Inspector
Tom Blakeney: Asst. Chief Inspector

Scott Layton: Lead Judge Written Reports
Abdallah Kiswani: Lead Judge Oral Presentations
Neel Patel: Lead Steward
Pilots: Jason Shulman
Tim Yousey
Jason Bauer





Welcome to Florida!

SAE International Staff:

Brett Foley - Aero Design Program Lead

David Sander - Community Programs Manager

Sara Guffey - Enablement Manager

Maria Scanga - Support Staff



Tent and Field Rules

- One table per team
- Four chairs per team
- Teams will pick up their table and chairs from the storage tent.
- No electricity in tents: use power/charging area for power needs.
- Motor testing in designated area at site west of tents.
- Please remember: only student teams members can work on aircraft. Please do not allow ineligible people to work on your aircraft.
- SAE International and all teams are guests of the airport! Keep your areas CLEAN!



The following entry and exit rules below are airport requirements:

1. The airport **cannot** be entered before 6AM. Please do not ask to get in before 6AM.
2. Teams that do not have their own vehicles must prearrange for their own reliable and scheduled transportation. This transportation must be at the field to pick teams up no later than 5:30PM Saturday and 3PM Sunday. You must have transportation with enough seats for all team members.
3. All SAE traffic must enter and exit via Lakeland Linder Airport, Gate 118 only.
4. All teams must be out of the park by 5:30PM.
5. Our last volunteer workers cannot leave the field until all teams have left.
6. Please be polite and cooperative at all times with all airport officials and with the event officials and volunteers. See rules numbers 1.17.1 and 1.17.2.
7. There will be NO flying at the field outside scheduled hours, please, do not ask.



Florida Wildlife WARNING

- Welcome to the State of Florida
- Beware of Florida Natives!
- Paradise Field is in a large low-traffic area
- Some areas are swampy and unmaintained
- The pictured native species are all dangerous and some are known to be in the area
- Watch where you step!
- Stay on the path! Keep to higher traffic areas
- If you see these Florida Natives, back away, and let SAE or airport staff know





Orlando Hobby Shops (approx. 1 hour away):

- **Graves R/C Hobbies:** 4814 N Orange Blossom Trail
Orlando, FL 32810
p.(407)294-5699
- **Colonial Photo & Hobby Inc.:** 634 N Mills Ave
Orlando, FL 32803
p.(407)841-1485



FRIDAY ONLY PRACTICE

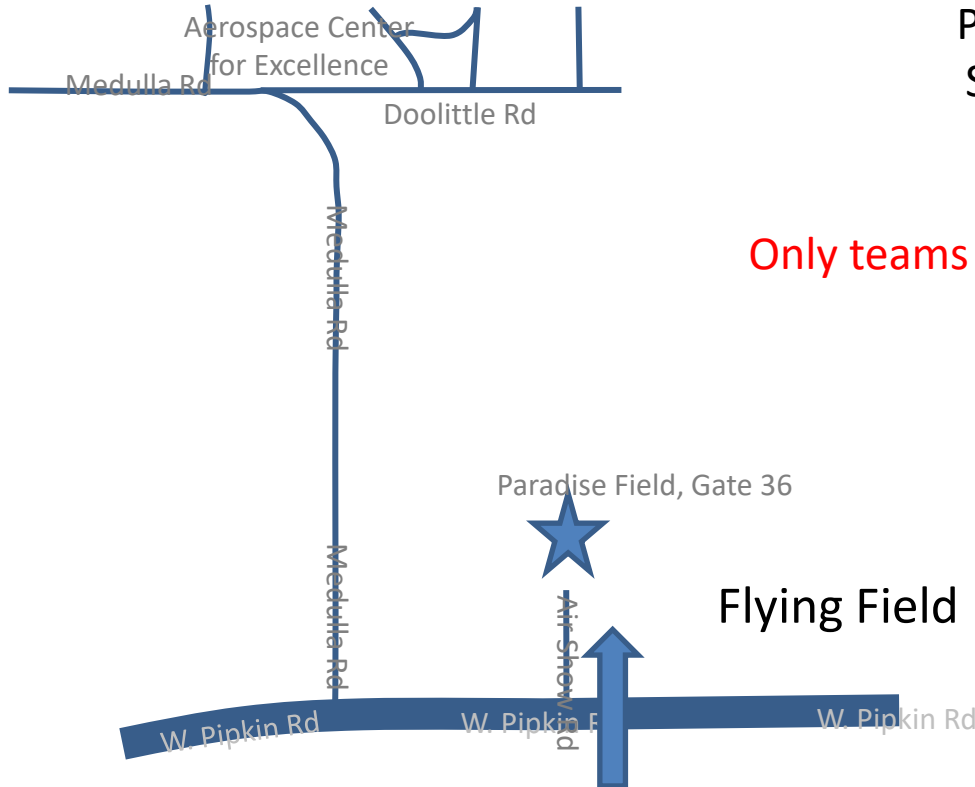
Practice Flying Opens - 10:00 AM

Safety Briefing 12:00 – 12:45PM

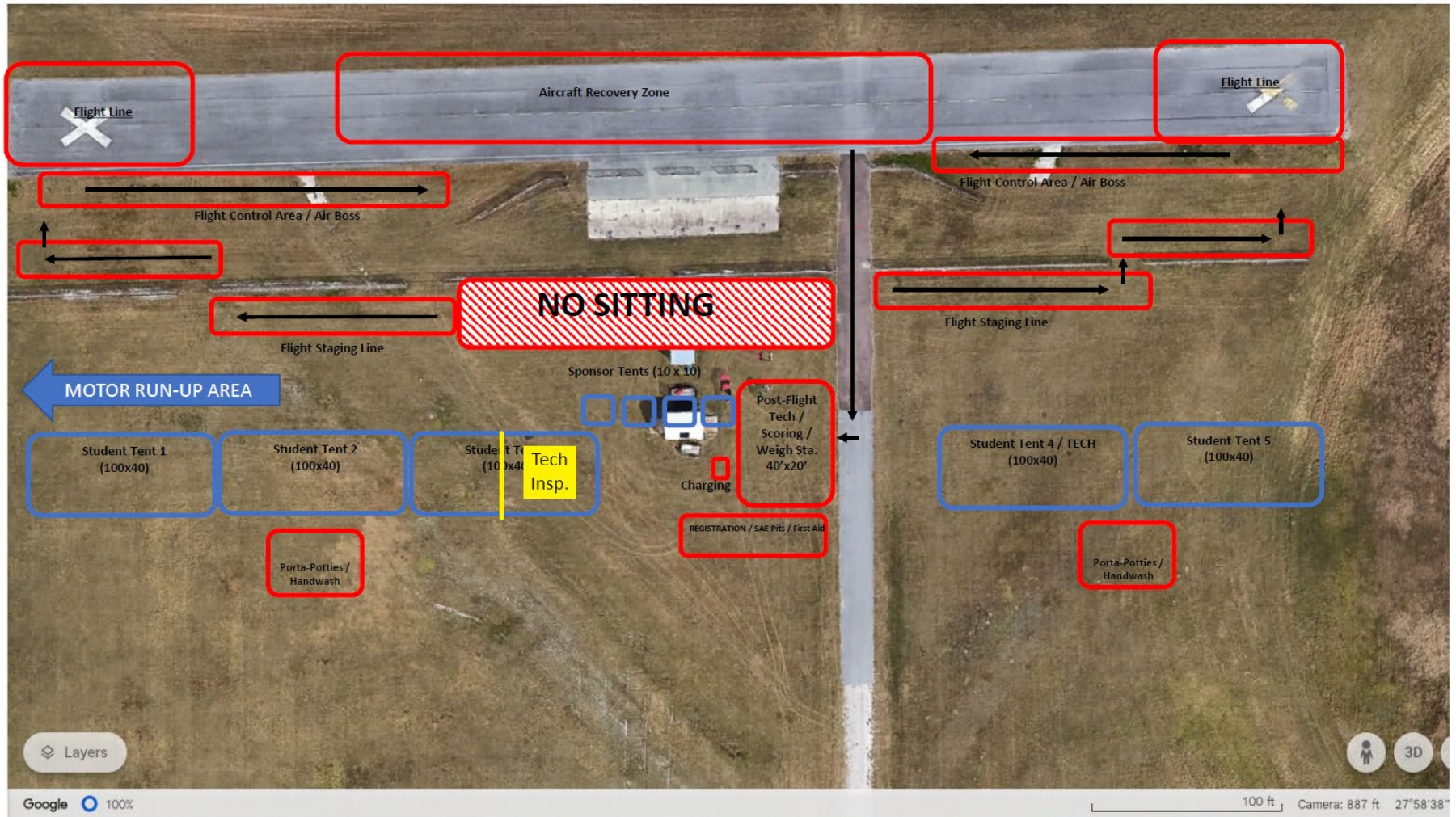
Practice Flying Ends - 3:00 PM

Only teams who need video can fly 3:00PM to 5:00PM

NO EXCEPTIONS



Flying Field Directions





INSPECTION SUMMARY

- No schedule, show up early
- Teams must certify planes meet 100% of the rules, in saestars.com, before inspection.
- If you have question use the forum or ask rules committee members at inspection before your inspection.
 - Rules committee members, formerly known as “red hats”, can be identified by referee pinnies
- Once inspections start any non-compliance will result in loss of points.
- Primary aircraft are given priority at inspection





INSPECTION PROCEDURE

- Teams may bring backup aircraft for inspection. If any aircraft is out of compliance with the rules, team will incur penalty points
- Regular: Bring plane in sections less than 4ft
- Micro: Tanks will be inspected first outside of the tent
- Adv: Wing does not need to be attached

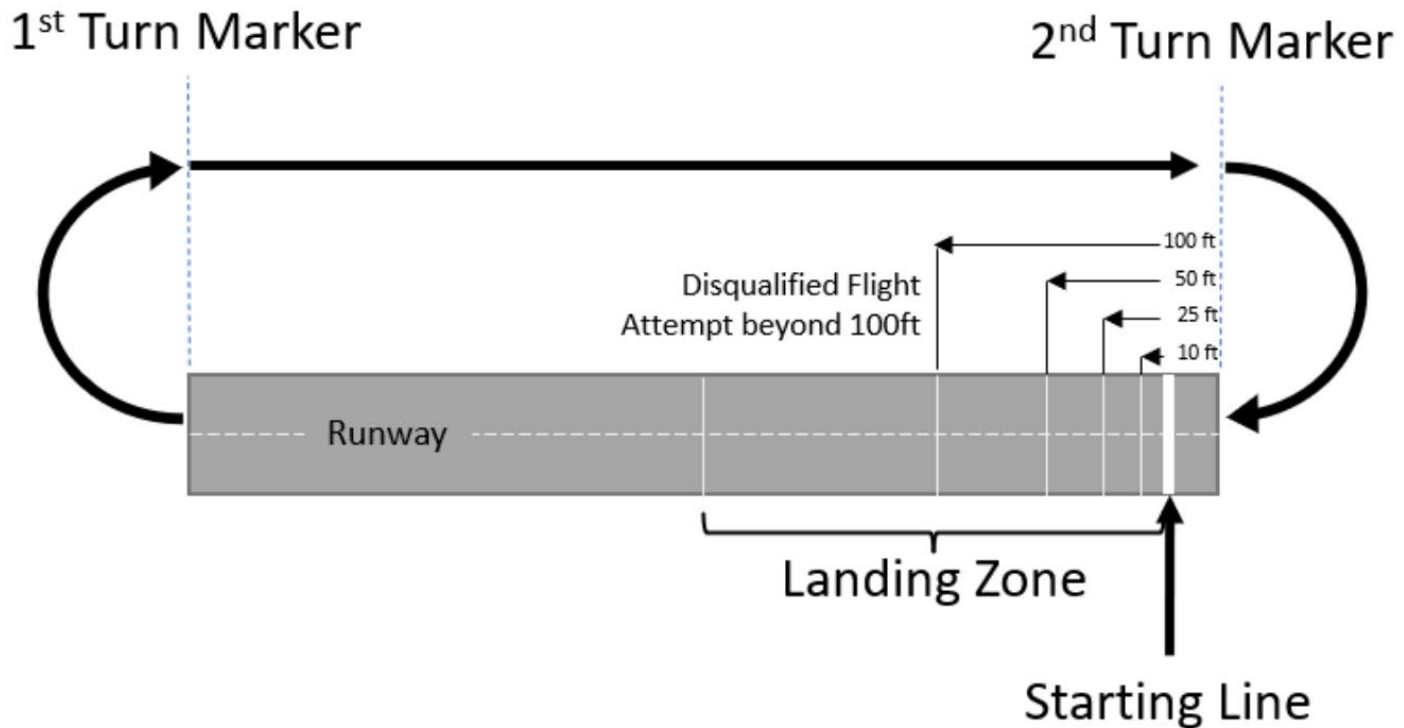


FLIGHT OPS SUMMARY

- Teams must have a Flight Card to enter the Flight Queue
- Flight Cards are Available at the SAE Desk
- Pilot's meeting at 7:30AM (SATURDAY/SUNDAY)
- Flying starts at 8:00AM (ALL DAYS)
 - All videos required to have been submitted prior to first flight Saturday
- Lunch break 12:00-12:30PM (No Flying)
- No takeoffs after 5:00PM (No Exceptions)
- Must clear field and leave site by 5:30PM (Gates Locked)
 - Vehicle pickup arrangements must be called by 4:30PM (Uber, Taxi, etc..)

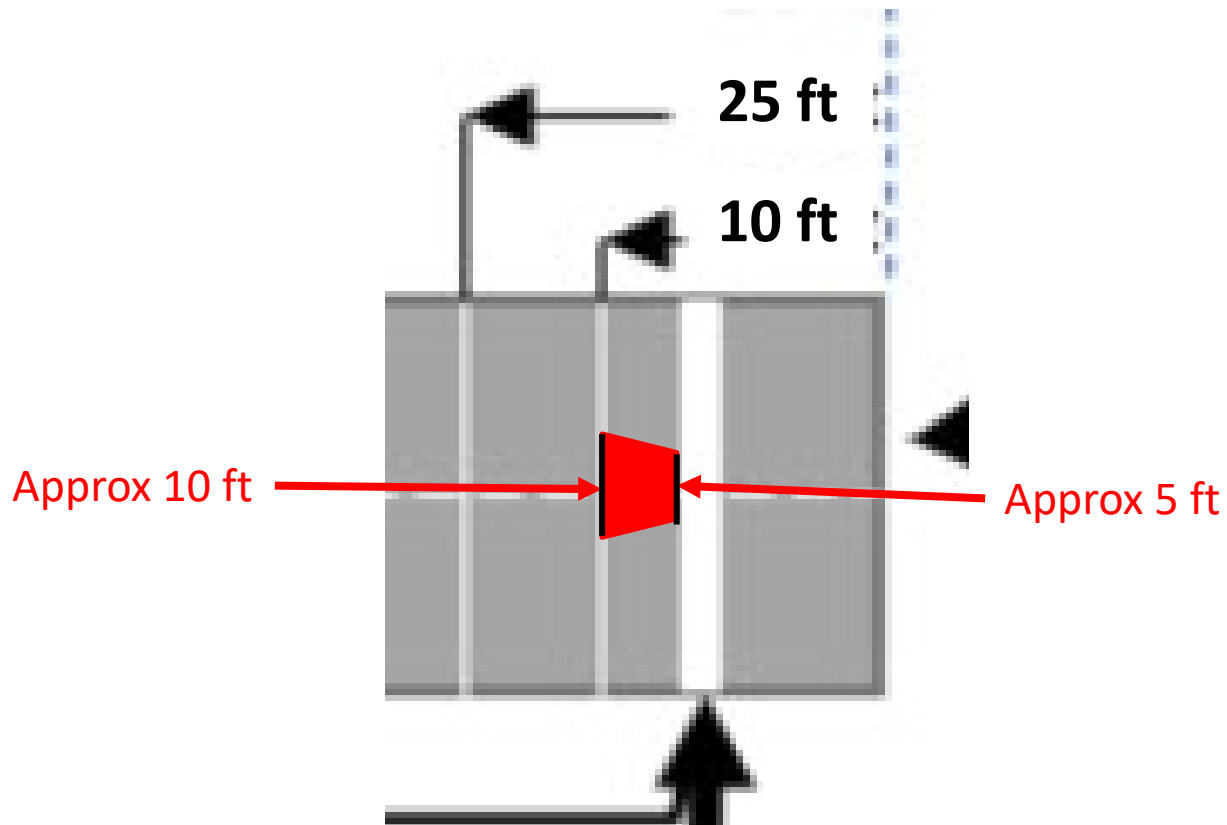


MICRO FLIGHT OPS SUMMARY





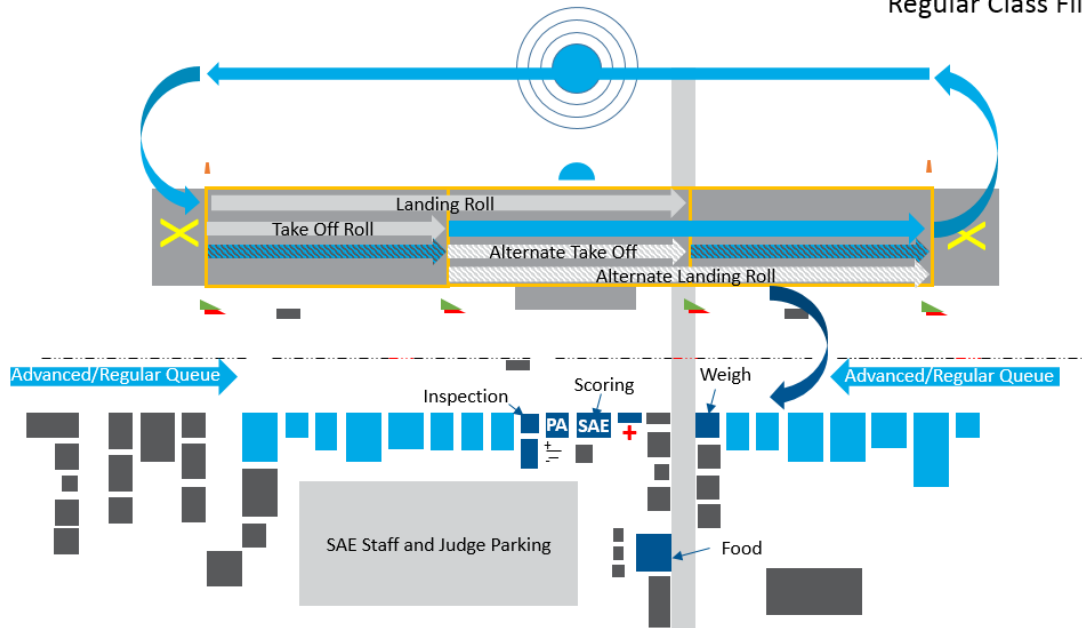
MICRO FLIGHT OPS SUMMARY





REGULAR FLIGHT OPS SUMMARY

Regular Class Flight

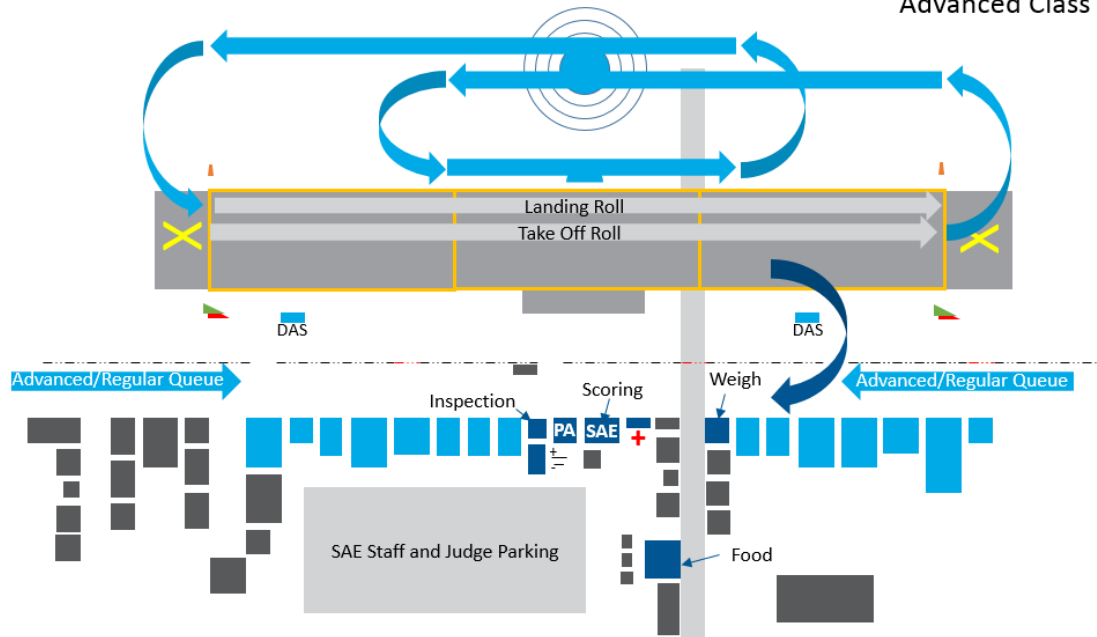


- 3-Team Members at Flight-Line.
- Take-Off Time: 120s
- Land in same direction as take-off on Pavement.
- 100 ft take-off zone.
 - One take-off allowed.
 - Aircraft leaving pavement is a take-off.
 - One attempt per flight card.



ADVANCED FLIGHT OPS SUMMARY

Advanced Class Flight



- 3-Team Members at Flight-Line.
- Take-Off Time: 180s
- Land in same direction as take-off on Pavement.
- Declare Payload Release Approach Direction.
- CDA Release >200 ft from Landing Zone



POST-FLIGHT OPS SUMMARY

- Wait for your flight steward to meet you at the aircraft.
- Unplug your arming plugs as soon as possible for all classes!
- Report to weigh-in station if flight is successful.
- Do not disassemble aircraft until told to do so.



Other topics:

- Please stack your tables when you leave
- Clean up your area as you go and at the end of each day of flying.
- Heat/Sunscreen, hydration, wildlife, weather.
- Daylight Savings Time: Time Changes 01:00AM Sunday, March 10.
(*Clocks advance 1-hour*)
- Questions?





**THANK YOU FOR COMPETING THIS
YEAR!**

